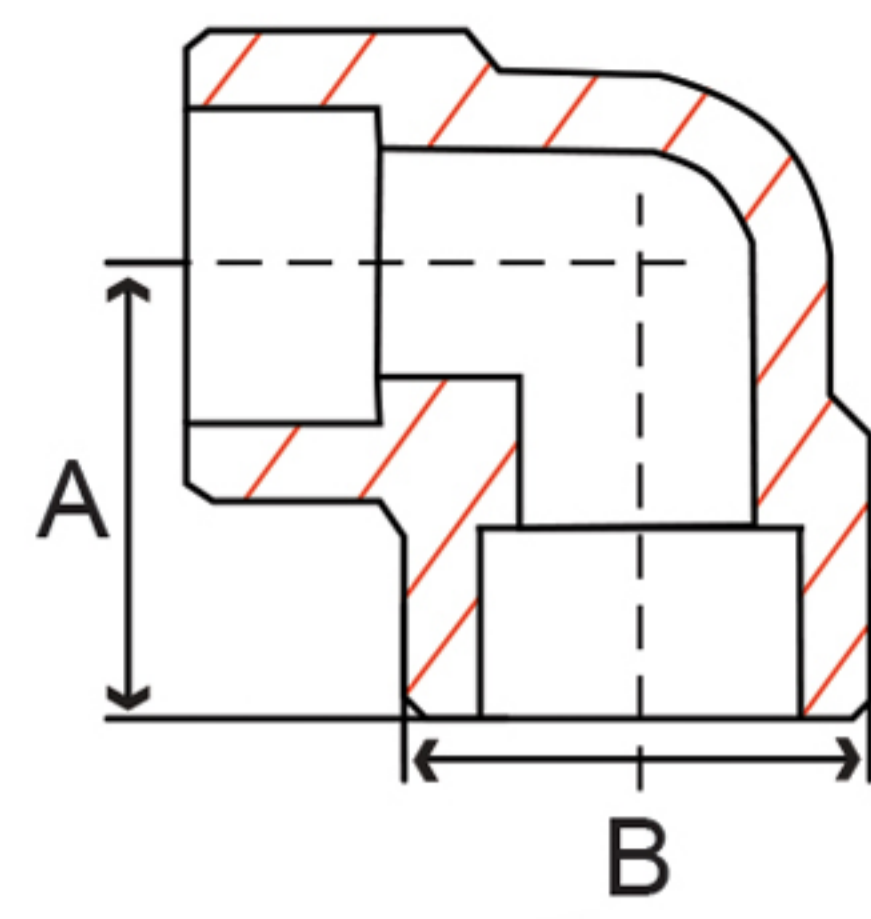


**Fig. 52E 3 – 90° Elbow**



Size IN	Part Number	A IN	B IN	Master	Weight LB
1/8	52E 3001	0.82	0.68	150	0.2
1/4	52E 3002	0.82	0.82	150	0.3
3/8	52E 3003	0.91	0.98	100	0.2
1/2	52E 3004	1.00	1.20	80	0.4
3/4	52E 3006	1.25	1.41	50	0.7
1	52E 3010	1.38	1.74	30	1.1
1-1/4	52E 3012	1.56	2.10	20	1.8
1-1/2	52E 3014	1.75	2.36	15	2.3
2	52E 3020	2.12	2.89	8	3.7
2-1/2	52E 3024	2.24	3.54	4	7.0
3	52E 3030	2.87	4.21	2	11.8
4	52E 3040	3.37	5.30	1	24.1

MILV